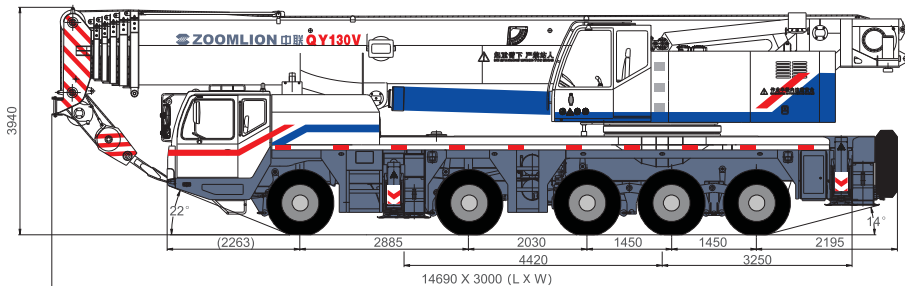


## Main Technical Parameters QY130V633

	Items	Values	Remarks	
Working performance parameters	Maximum rated lifting capacity	kg	130000	
	Maximum load moment of basic boom	kN.m	4860	
	Maximum load moment of fully extended main boom	kN.m	2080	
	Maximum lifting height of main boom	m	58.5	Without considering boom deformation Values in parentheses are the totals with extension jib added
Working speed	Maximum lifting height of jib	m	77(85)	
	Maximum single rope speed (main winch)	m/min	110	Fourth layer of drum
	Maximum single rope speed (auxiliary winch)	m/min	70	Second layer of drum
	Boom extending time	s	>550	
Traveling parameters	Boom derricking up time	s	>70	
	Slewing speed	r/min	<1.5	
	Maximum traveling speed	km/h	72	
	Maximum gradeability	%	40	
	Minimum traveling diameter	m	23	
	Minimum ground clearance	mm	320	
	Exhaust emission limits	+	In compliance with standard regulations	GB3847-2005 GB17691-2005 Guo III
	Fuel consumption per 100km	L	70	
	Self weight under traveling conditions (total mass)	kg	54900	
	Complete vehicle kerb mass	kg	54705	
Weight parameters	Front axle load	kg	19900	
	Rear axle load	kg	35000	
Dimensional parameters	Overall dimensions (L x W x H)	mm	14690 x 3000 x 3940	
	Outrigger longitudinal span	m	7.67	
	Outrigger lateral span	m	7.8 (fully extended), 5.3 (semi-extended)	
	Length of main boom	m	12.8-57.5	
	Main boom elevation angle	°	-1.5-82	
	Jib length	m	11, 18.6	
	Jib + Extension jib	m	26.6	
	Jib set angle	°	0, 30	



## Lifting Height Curve QY130V633

